



Cambridge International Examinations
Cambridge International General Certificate of Secondary Education

MUSIC

0410/13

Paper 1 Listening

October/November 2016

MARK SCHEME

Maximum Mark: 70

Published

This mark scheme is published as an aid to teachers and candidates, to indicate the requirements of the examination. It shows the basis on which Examiners were instructed to award marks. It does not indicate the details of the discussions that took place at an Examiners' meeting before marking began, which would have considered the acceptability of alternative answers.

Mark schemes should be read in conjunction with the question paper and the Principal Examiner Report for Teachers.

Cambridge will not enter into discussions about these mark schemes.

Cambridge is publishing the mark schemes for the October/November 2016 series for most Cambridge IGCSE[®], Cambridge International A and AS Level components and some Cambridge O Level components.

© IGCSE is the registered trademark of Cambridge International Examinations.

This document consists of **8** printed pages.

© UCLES 2016



[Turn over

Page 2	Mark Scheme	Syllabus	Paper
	Cambridge IGCSE – October/November 2016	0410	13

Music A1

- 1 How many beats in a bar are there in this extract? [1]
3
- 2 Which of the following best describes the shape of the bass line at the start of the extract? [1]
Descends by step
- 3 What type of voice is heard in the extract? [1]
Treble / soprano
- 4 Name one of the accompanying instruments. [1]
Cello, organ or lute
- 5 Which of the following is this extract an example of? [1]
Ground bass
- 6 (a) Which period of music is this extract from? [1]
Baroque
- (b) Give two reasons for your answer. (Do not repeat any information already given in your answers). [2]
Continuo [1]
Suspensions [1]
False relation [1]
Irregular vocal phrase lengths [1]
Continuously moving bass line / significant bass line (if not already given ground bass in question 5) [1]

Music A2

- 7 Name the instrument at the start of this extract. [1]
Flute
- 8 (a) What is the texture of the music at the start of the extract? [1]
Monophonic / single melodic line
- (b) What is the texture later in the extract? [1]
Polyphonic / counterpoint

Page 3	Mark Scheme	Syllabus	Paper
	Cambridge IGCSE – October/November 2016	0410	13

9 (a) **What style of music is this?** [1]
Minimalism

(b) **Give three reasons for your answer.** [3]
 Repetition / ostinatos / loops [1]
 Music gradually changes [1]
 Many layers [1]
 No melody [1]
 Slow harmonic change [1]
 Notes replaced with rests [1]
 Canon [1]
 Phase shifting [1]

10 **Who composed this music?** [1]
Reich

Music B1

11 **Name the main melody instrument.** [1]
Dizi (accept Hsiao, tit-zu, NOT flute)

12 **Which scale is used in the printed extract?** [1]
Pentatonic

13 **After the printed extract the recording continues. Describe in detail what is played.** [3]
 The music is repeated [1] with different ornamentation [1]
 The end is played (an octave) higher [1] and slower [1]
 There is then a tremolo (accept trill) [1]
 Finally the music is faster [1] and only the accompanying instruments play [1]

14 **Where does this music come from?** [1]
China

Music B2

15 (a) **Name the texture of the music at the start of the extract.** [1]
Melody and accompaniment / homophonic

(b) **Later in the extract a new instrument joins. What does this instrument play?** [1]
It doubles the melody / it plays the melody in 3rds / in parallel (NOT in harmony)

Page 4	Mark Scheme	Syllabus	Paper
	Cambridge IGCSE – October/November 2016	0410	13

16 (a) **Where does this music come from?** [1]
Ecuador / South America

(b) **Other than the information already given for this extract, give three reasons for your answer.** [3]

- Syncopation [1]
- Guitar / charangos / tres [1]
- Quena [1]
- Lively / fast [1]
- Music using repetition [1] and sequence [1]
- Simple diatonic chords / harmony [1]

Music B3

17 **Complete the table below, naming the two instruments in the extract and how the sound is produced.** [4]

Instrument	How is the sound produced on this instrument?
Koto	Plucked
Shakuhachi	Blown

18 **Describe the music played by the first instrument before the second instrument enters.** [4]

- The koto plays patterns of 3 notes [1]
- There is an accelerando at the start [1]
- Each pattern is repeated 8 times [1]
- There are four different patterns [1]
- Three patterns descend /one pattern ascends [1]
- The third pattern is an octave lower than the first pattern [1]
- It is in a minor key [1]
- It uses the pentatonic scale [1]

19 **Suggest two ways in which this music differs from court music.** [2]

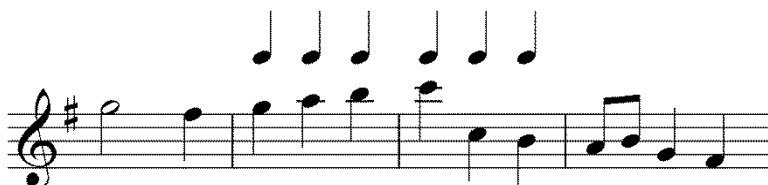
- No heterophony [1]
- Small number of instruments [1]
- No percussion [1]
- Metrical / regular sense of pulse [1]

Page 5	Mark Scheme	Syllabus	Paper
	Cambridge IGCSE – October/November 2016	0410	13

Music C1

- 20 Name the bracketed interval in bars 1 – 2.** [2]
 Minor [1] seventh [1]
 (Mark for minor only if seventh is correct)

- 21 The melody is incomplete in bars 5 – 6. Fill in the missing notes on the staff below. The rhythm has been given to help you.** [3]
 (The same melody is heard again in bars 25 – 26).



- Entirely correct or 1 error: [3]
 4 correct notes or 3 correct notes in the context of a correct melodic shape: [2]
 2 correct notes OR general melodic shape reproduced: [1]
 Little melodic accuracy: [0]

- 22 (a) What is the key of the music in bar 29?** [1]
 C major

- (b) How does this relate to the key at the start of the extract?** [1]
 Subdominant

- 23 How is the texture in bars 37 – 44 different from bars 29 – 36?** [2]
 There is now imitation / it is polyphonic (accept round/canon) [1] with only three instruments to begin this section [1].
 Earlier it was homophonic / chordal [1]

- 24 What type of ensemble plays this extract?** [1]
 String quartet (accept string trio but NOT just string)

- 25 (a) From what type of piece is this extract taken?** [1]
 Minuet and trio

- (b) Give three reasons for your answer.** [3]
 Triple time / 3/4 [1]
 Moderate tempo [1]
 Ternary form / ABA [1]
 Contrasting trio / different key [1]

- (c) What would you expect to hear played next in this type of piece?** [1]
 The first section again / repeat of minuet

Page 6	Mark Scheme	Syllabus	Paper
	Cambridge IGCSE – October/November 2016	0410	13

- 26 Who composed this music? [1]
Mozart

Music D1

- 27 (a) What is the key of the music at the start of the extract? [1]
B major

- (b) What is the relationship of this key to the tonic key of the movement? [1]
Dominant

- 28 (a) What is represented by the music from bar 4? [1]
Thunder / lightning

- (b) How does Vivaldi achieve this in his music? [3]
Full orchestra [1] playing low [1] demisemi-quavers / tremolo [1] and scales [1]
Solo violin playing high [1] broken chords (accept arpeggios) [1].

- 29 (a) What is the name for the numbers that appear beneath the bass line in this concerto? [1]
Figured bass / thoroughbass

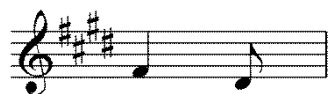
- (b) What are they for? [1]
They show the notes / chords to be played (by the continuo).

Music D2

- 30 (a) Describe in detail the accompaniment to the solo and 1st violin melody in bars 1 to 5. [1]
2nd violins play the melody a 3rd lower [1]
There is a pedal / drone [1] on E /the tonic [1] and B/the dominant [1] in fifths [1]
Con sordino / muted [1]

- (b) What instrument named in the poem is represented by the cellos and violas? [1]
Bagpipes

- 31 On the staff below, write the two notes of the viola part at the end of bar 6 in the treble clef. [2]



One mark per note

Page 7	Mark Scheme	Syllabus	Paper
	Cambridge IGCSE – October/November 2016	0410	13

- 32 Name the cadence and key heard in bars 21 to 22.** [2]
 Cadence: Perfect
 Key: C# minor

Music D3

- 33 What is the tempo marking at the beginning of the movement from which this extract is taken?** [1]
 Allegro con spirito

- 34 How is the music played by the first violins at the beginning of the recorded extract related to music from earlier in the movement?** [2]
 It is the introductory theme [1] but inverted [1] and in a minor key [1].

- 35 (a) What instrument enters at the end of bar 3?** [1]
 Cello

- (b) What music does it play?** [1]
 First subject

- 36 On the staff below, write out the first two notes of the clarinet melody (which starts in bar 23) at sounding pitch.** [2]



One mark per note

- 37 What section of the movement is this extract?** [1]
 Development

Music D4

- 38 (a) The theme that is played at the beginning of the extract is heard before in the movement (before the recorded extract). What key was it in originally?** [1]
 B major

- (b) Why is this choice of key unusual?** [1]
 The third movement would usually start in the tonic key (D major)

- 39 At the end of the printed skeleton score, the recorded extract continues. Explain what happens in the music in this final section of the extract.** [3]
 The guitar plays the original theme [1] but with added notes / as a variation [1]. There are interjections from bassoon and brass [1]. It then ascends / modulates [1].

Page 8	Mark Scheme	Syllabus	Paper
	Cambridge IGCSE – October/November 2016	0410	13

- 40 (a) Briefly describe the structure of the movement as a whole.** [1]
The movement is in Rondo form
- (b) How does the recorded extract fit within this structure?** [2]
The extract is the Rondo theme [1] and the first episode [1].